

CHISWICK PARK
#ENJOY-WORK

WASTE & RECYCLING

ESG Legacy



WASTE & RECYCLING

- In 2016, Waste and recycling levels and percentages were very low at c34%, the data was not reliable or accurate, and the operational approach was no longer cost effective or efficient.
- The approach was heavy on vehicle movement and machinery, with compactors located at the rear of each building and collections taking place multiple times a week for every building.
- In phase one, we invested more than £100K in new plant, instructed a new collection-partner and streamlined recycling across the Park.
- We achieved this through centralising our waste operation and re-establishing new ways of working.



WASTE & RECYCLING



2 X 30YD COMPACTORS

To compact general waste and recycled



1 X VERTICAL BALER

Compact and bale cardboard for rebates which are reinvested into the W&R program.

WASTE & RECYCLING

- Six old 14 yard compactors and one 32 yard compactor were replaced with two 32 yard compactors; one for Dry Mixed Recycling (DMR) and one for General Waste (GW).
- We increased cardboard recycling capacity by replacing the small baler with a mid-sized model.
- We procured new 660 litre and 1,100 litre towable bins (one for DMR and one GW for each company) together with a bin tow-truck.



WASTE & RECYCLING



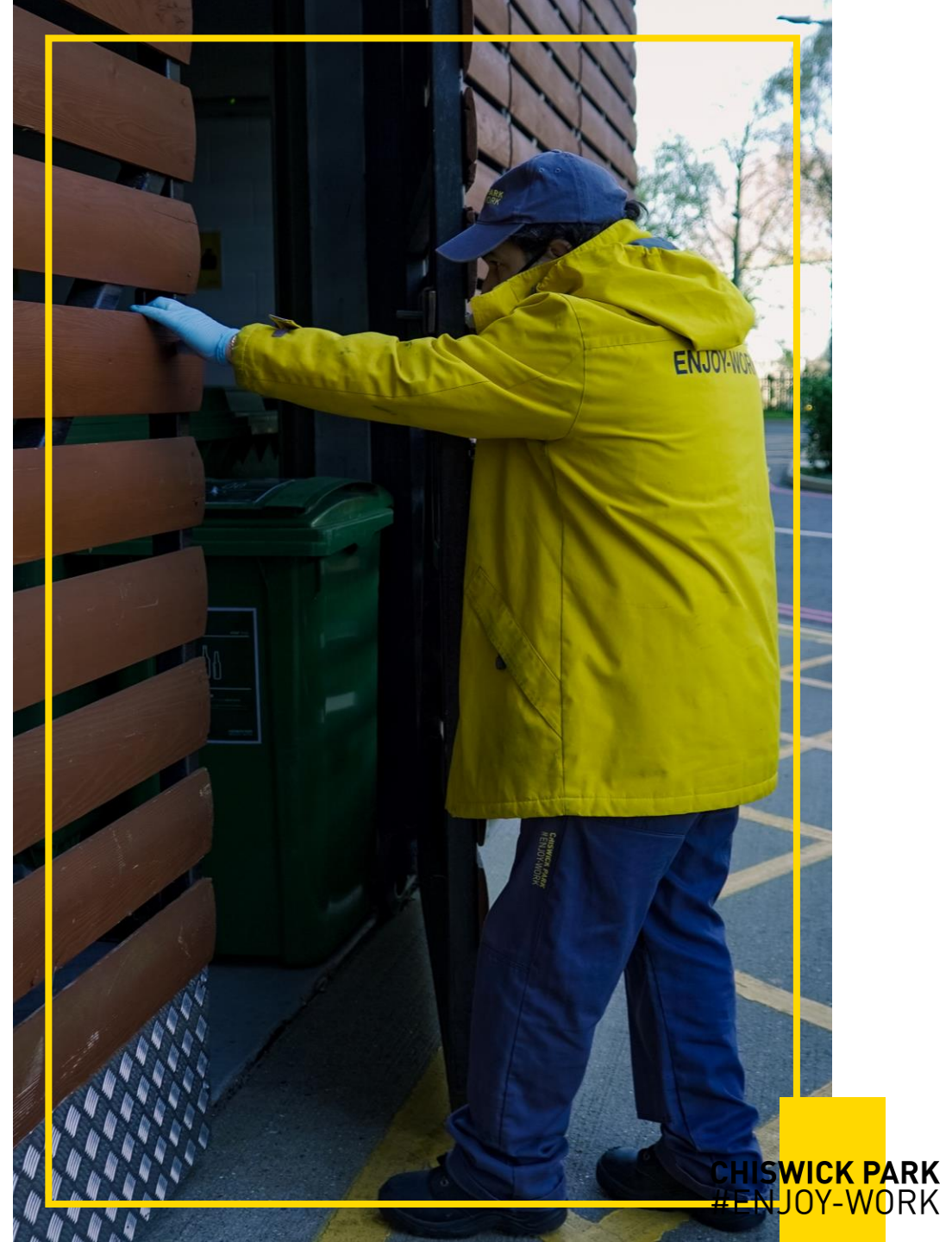
1 X ELECTRIC TOW TRUCK

For towing bins to/from bin stores/recycling hub located behind Building 7.



WASTE & RECYCLING

- We installed a Weigh-Tron System to weigh the bins and capture data.
- This investment allowed us to **reduce collections from 15 per week to six**, reducing our CO2 emissions from transporting waste.
- We appointed a new waste-collection partner, VEOLIA and enrolled two team members dedicated to working on the strategy from Monday to Saturday.



WASTE & RECYCLING



1 X WEIGHTRON SCALE & DISPLAY SCREEN

For weighing waste for inputting data into system.

WASTE & RECYCLING

- A more progressive operation and new hardware means our program is already innovating, inspiring and raising recycling rates across the park.
- Cutting-edge technology allow us to monitor measure and capture individual Companies' recycling performance.
- We have now launched phase two, introducing of a bespoke recycling strategy to engage and motivate companies to adopt our recycling strategy.
- Guideline documents have been created to educate companies on how to deposit waste correctly and a system introduced to record individual Companies' data, both in terms of the amount they are recycling and what they are doing right and wrong.
- Our recycling team have visited more than half of company demises, spending time in their kitchens talking to staff about what goes in which bin.



WASTE & RECYCLING



2 X OPERATIVES

We invested in 2 full-time waste operatives.



WASTE & RECYCLING

General Waste Operations

- The General Waste bins are collected from each building by our electric tow-truck.
- The bin is weighed on our weightron system and data is logged.
- The bin is checked for contamination and photos taken.
- The bin is then emptied into our central compactor.



WASTE & RECYCLING

Recycling Waste

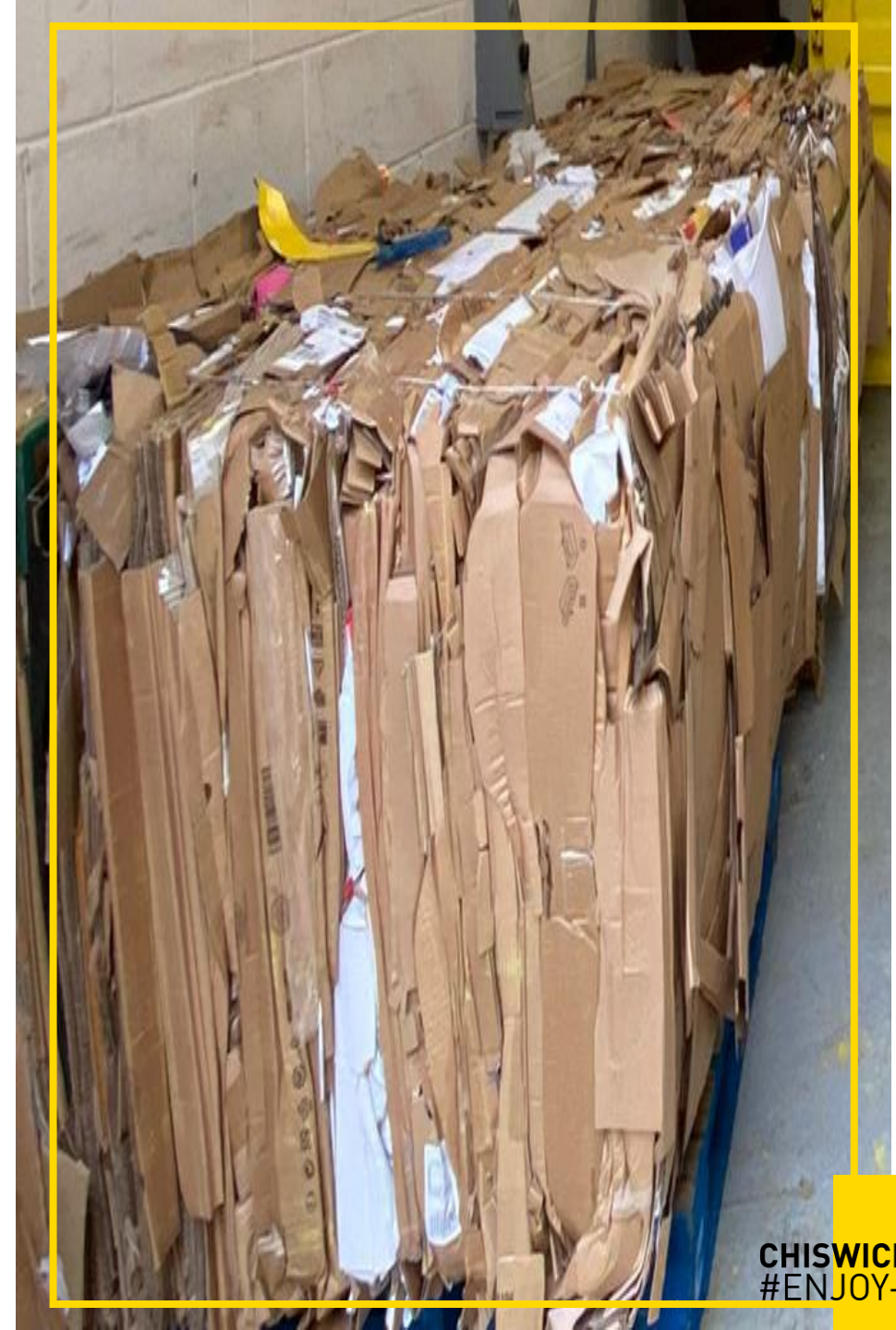
- The recycling bins are collected from each building by our electric tow-truck.
- The bin is weighed on our weightron system and data is logged.
- The bin is checked for contamination and photos taken.
- The bin is then emptied into our central compactor.



WASTE & RECYCLING

Cardboard Waste

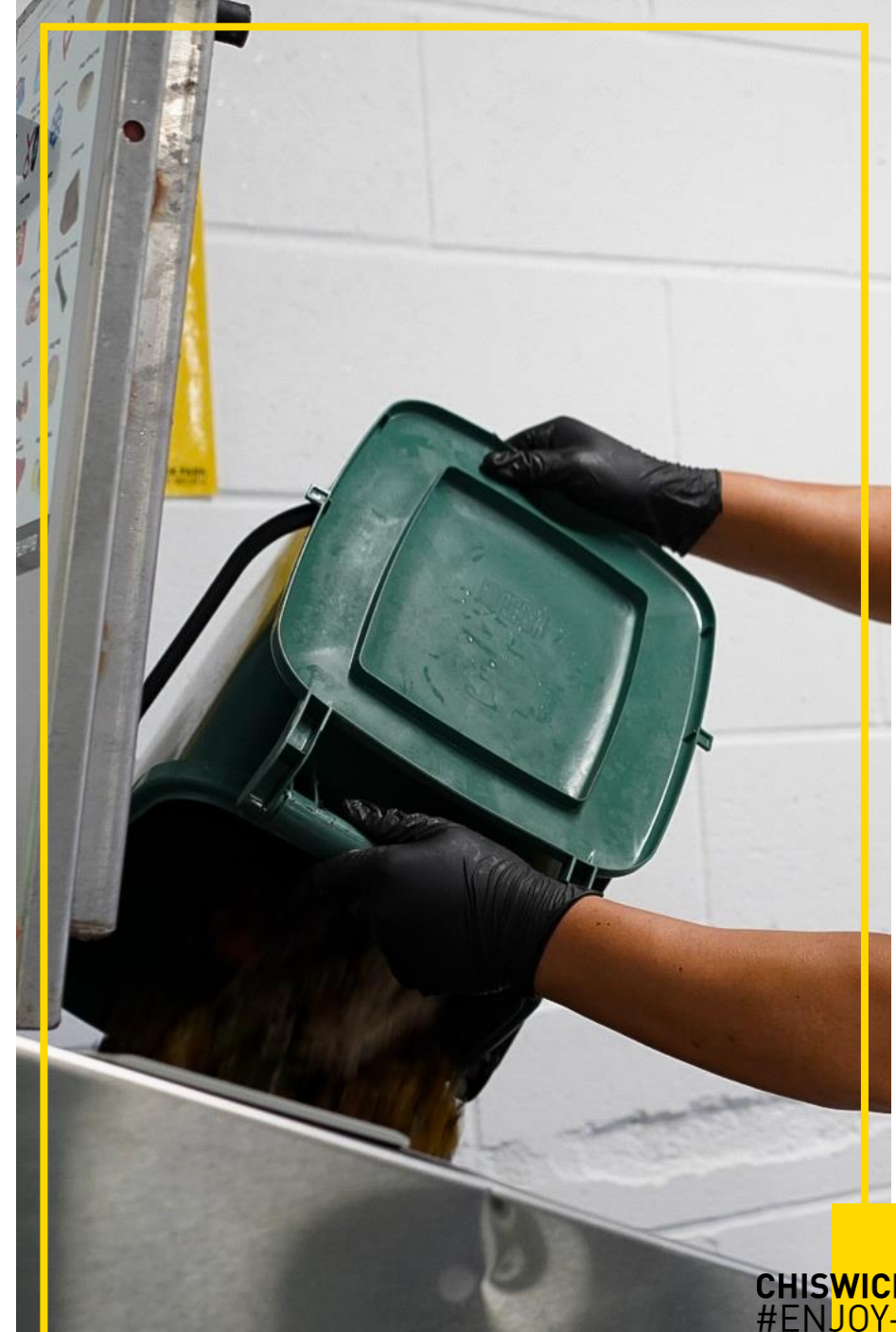
- Guest's flatten cardboard and place it in their Dry Mixed Recycling bin.
- The weight of the Dry Mixed Recycling bin includes the weight of the cardboard.
- The cardboard is extracted and taken to our baler for baling. These bales are stored and collected when required.
- A rebate is agreed and funds reinvested into the Waste & Recycling programme.



WASTE & RECYCLING

Food Waste

- Between 2016 and August 2021, 240L food bins were collected from each building by Veolia twice per week.
- The bins were assigned to individual buildings and weighed on the collection truck.
- The data is then retrieved from Veolia's data portal, formatted and shared with Guests.
- The data collated was per building.



WASTE & RECYCLING

Food Waste – Dave the Digester

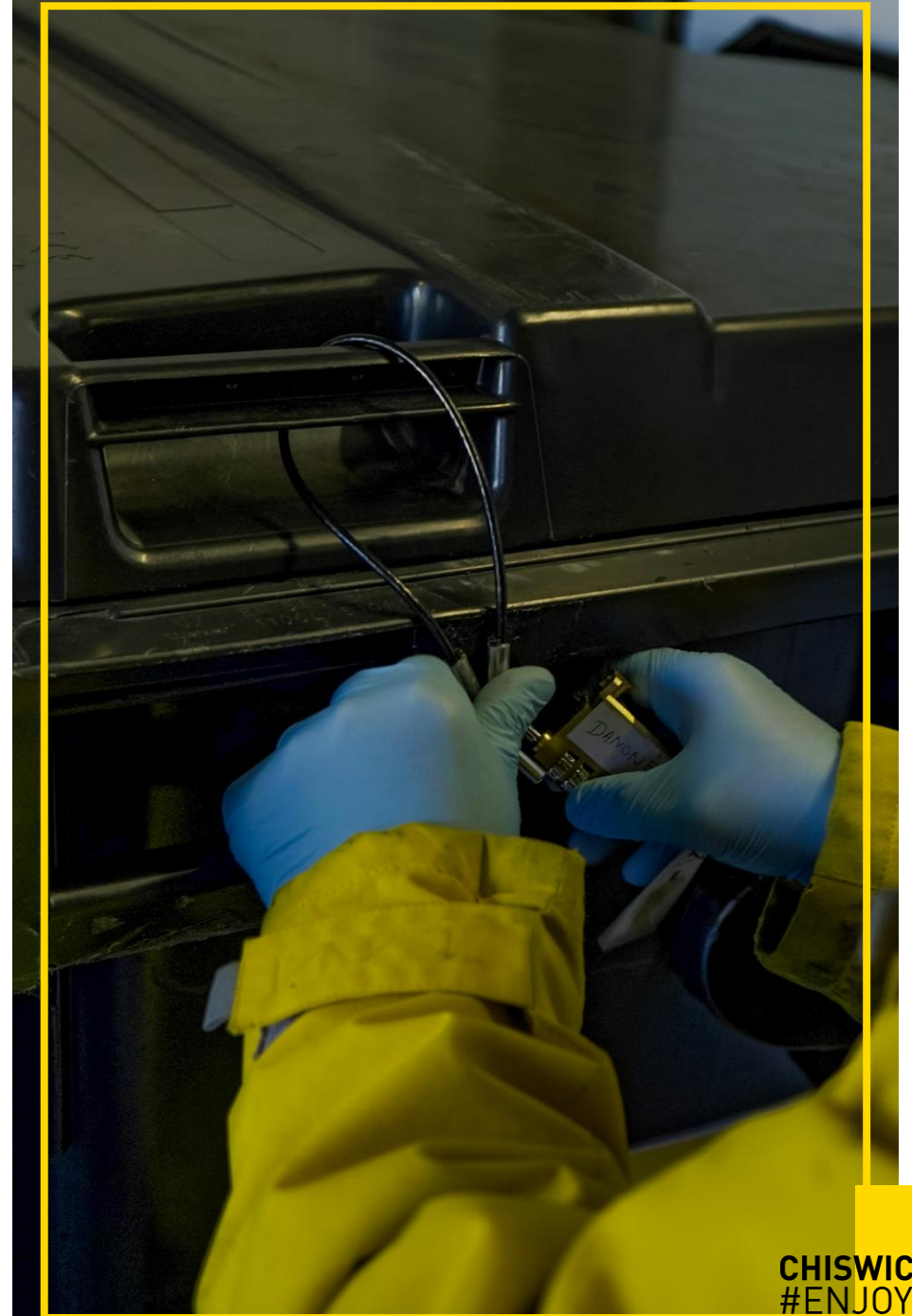
- From August 2021, we introduced a food digester giving it the name of Dave to in a bid to ensure guests were engaged with it.
- The digester is located in the middle of Building 5 bin stores.
- Each Building is now assigned food caddies rather than food bins which are collected daily by the Waste & Recycling operatives. Like the bins, the food caddies are assigned to each building.
- The digester turns food into new water which goes through the drainage system removing the need for food bin collections from an external provider reducing our carbon footprint by approximately 30%.



WASTE & RECYCLING

Data & Performance

- Each company has their own lockable waste bins.
- We collect and weigh their waste before we dispose of it.
- We produce professional reports for data analysis by guest company and by building.
- We show top 5 and bottom 5 performing companies.
- We incentives and recognise 'most improved' guest companies.
- From January 2022, we will then 'bill' each guest company based on the actual waste they produce – the more they recycle and the less waste they produce, the lower their costs.



WASTE & RECYCLING

Data & Performance

- We proactively engage with poor performing guest companies.
- We deliver engagement campaigns to create awareness and increase overall performance for everyone.
- Our partnerships are critical, both with 'JPC' and 'Don't Waste' in particular.

YTD DECEMBER 2021 WASTE OUTCOMES AT A GLANCE

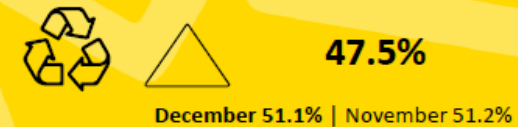
TONNES GENERATED YTD



SEGREGATED FOR DIVERSION



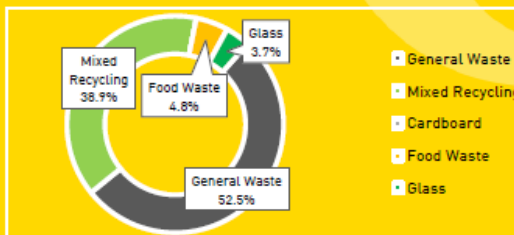
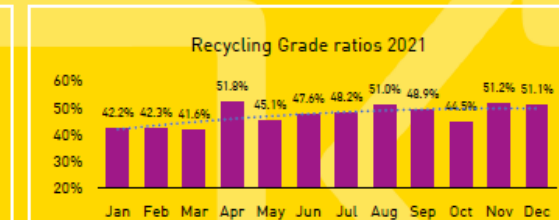
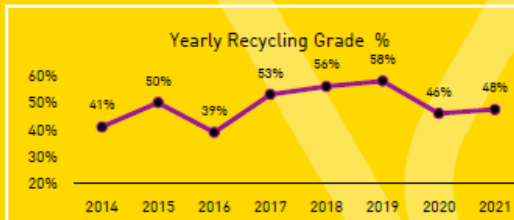
SEGREGATED FOR RECYCLING



SEGREGATED FOR DISPOSAL YTD



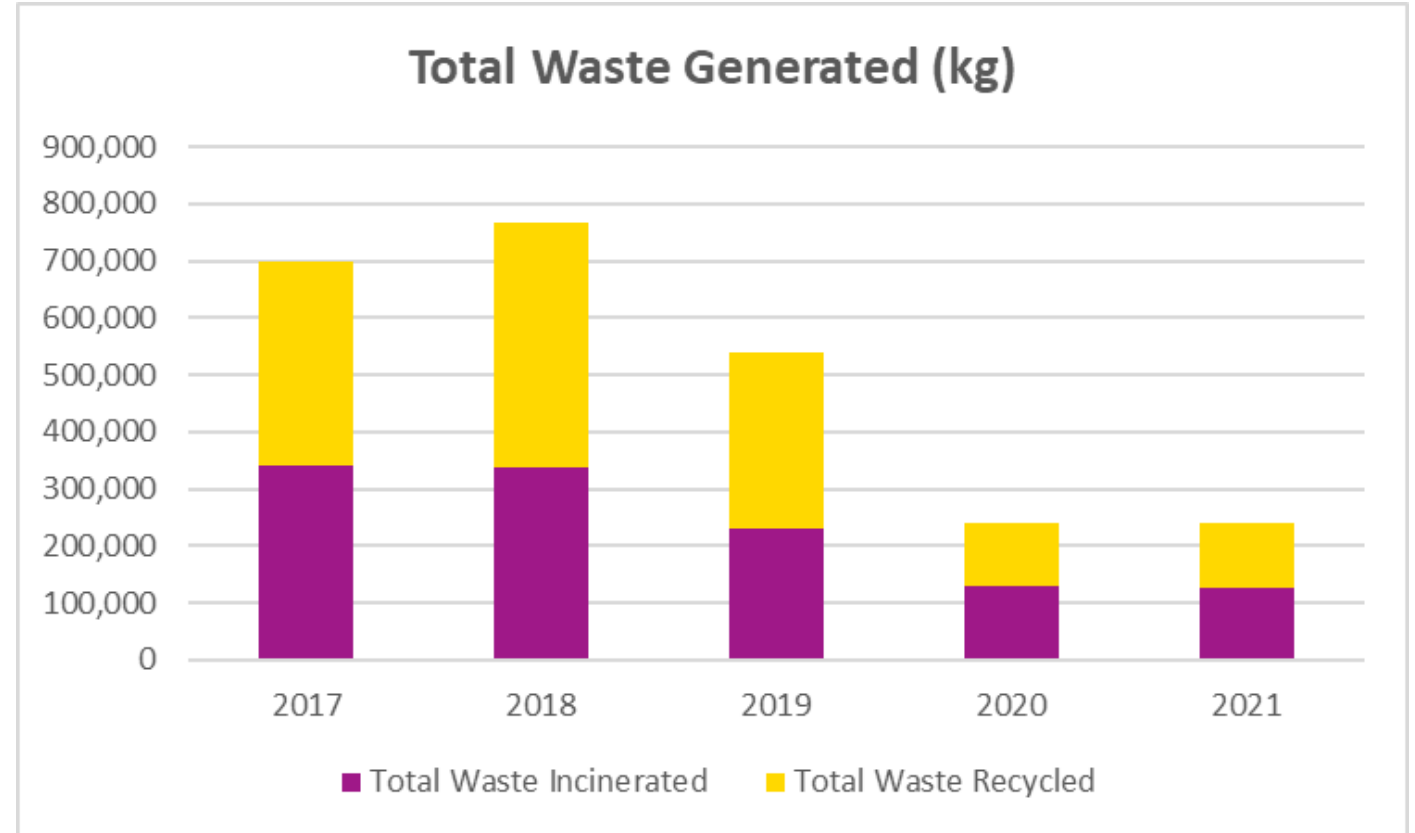
SEGREGATED FOR RECOVERY



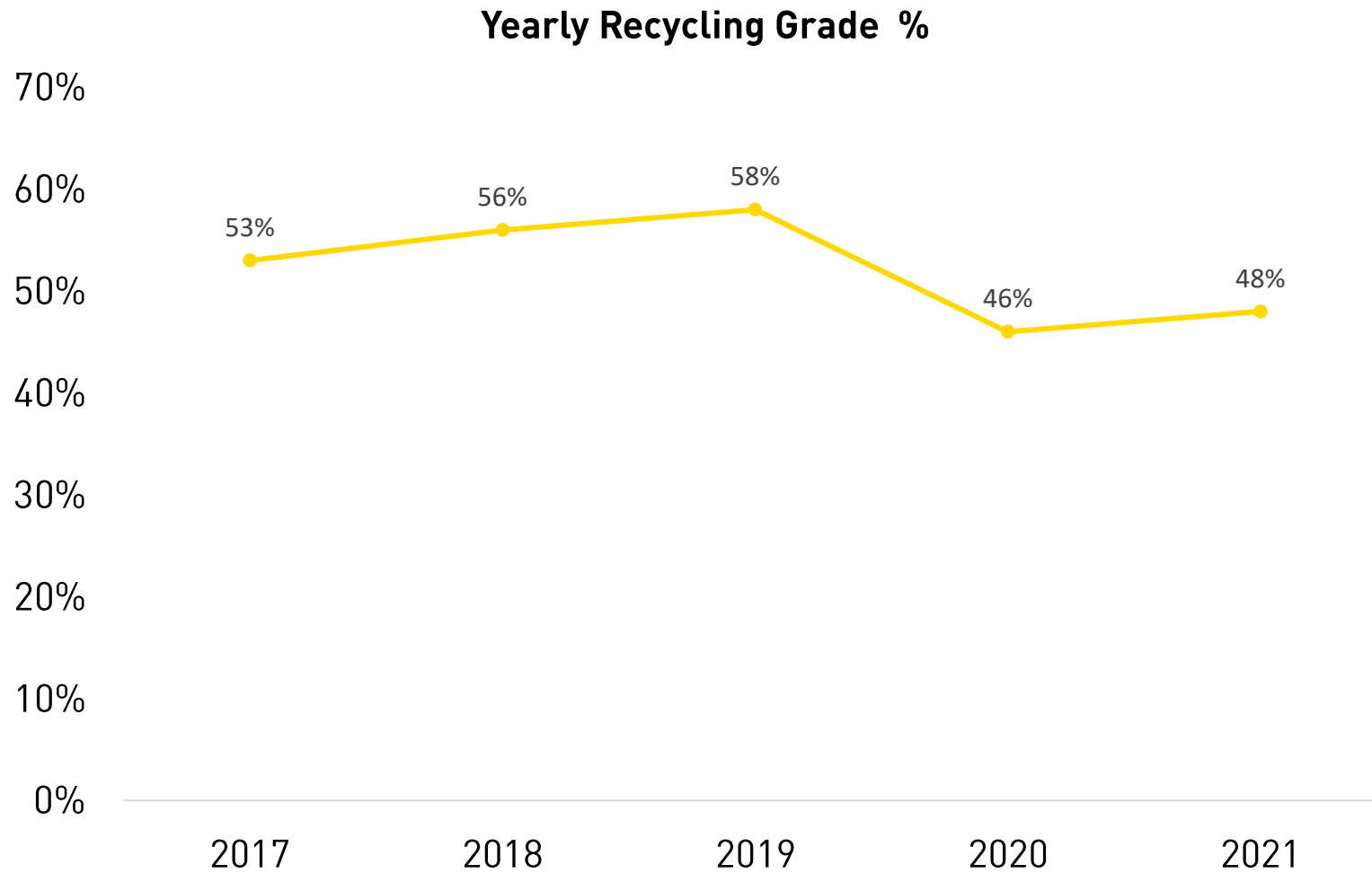
GRADE	YTD %	DEC%	NOV%
General Waste	52.5%	49%	51%
Mixed Recycling	38.9%	45%	39%
Cardboard	0.0%	0%	0%
Food Waste	4.8%	2%	4%
Glass	3.7%	4%	5%
Total (Tonnes)	248.4	22.2	27.6

WASTE & RECYCLING

- Our total waste generated has decreased by 67% during 2017 – 2021. In comparison to 2020, in 2021 the amount waste incinerated decreased by 3,500 kg, while recycled waste increased by 5,000 kg.
- Throughout the years we have sent zero waste to landfill.



Waste & Recycling



WASTE & RECYCLING

Guest Engagement in Reducing Waste Initiatives

- Global recycling day video released promoting best practices.
- Shared a 7min awareness video for Guests; “Be part of the solution, not the pollution”.
- Selected as finalist in the sustainability awards.
- Completed a ‘Ditch the Disposable’ survey giving a £100 voucher to the Winner to spend in a local restaurant and a sustainable gift to the runner up.



WAY FORWARD

This slide pack provided a high-level summary of our Waste Management in 2017 - 2021.

During this period, we set the foundation for robust environmental data collection and monitoring of performance, we delivered significant reductions in our impacts and we are ready to embark with our new ESG Strategy towards our next milestones of improving resource efficiency, reducing waste and achieving net-zero operational carbon of our buildings by 2026.

