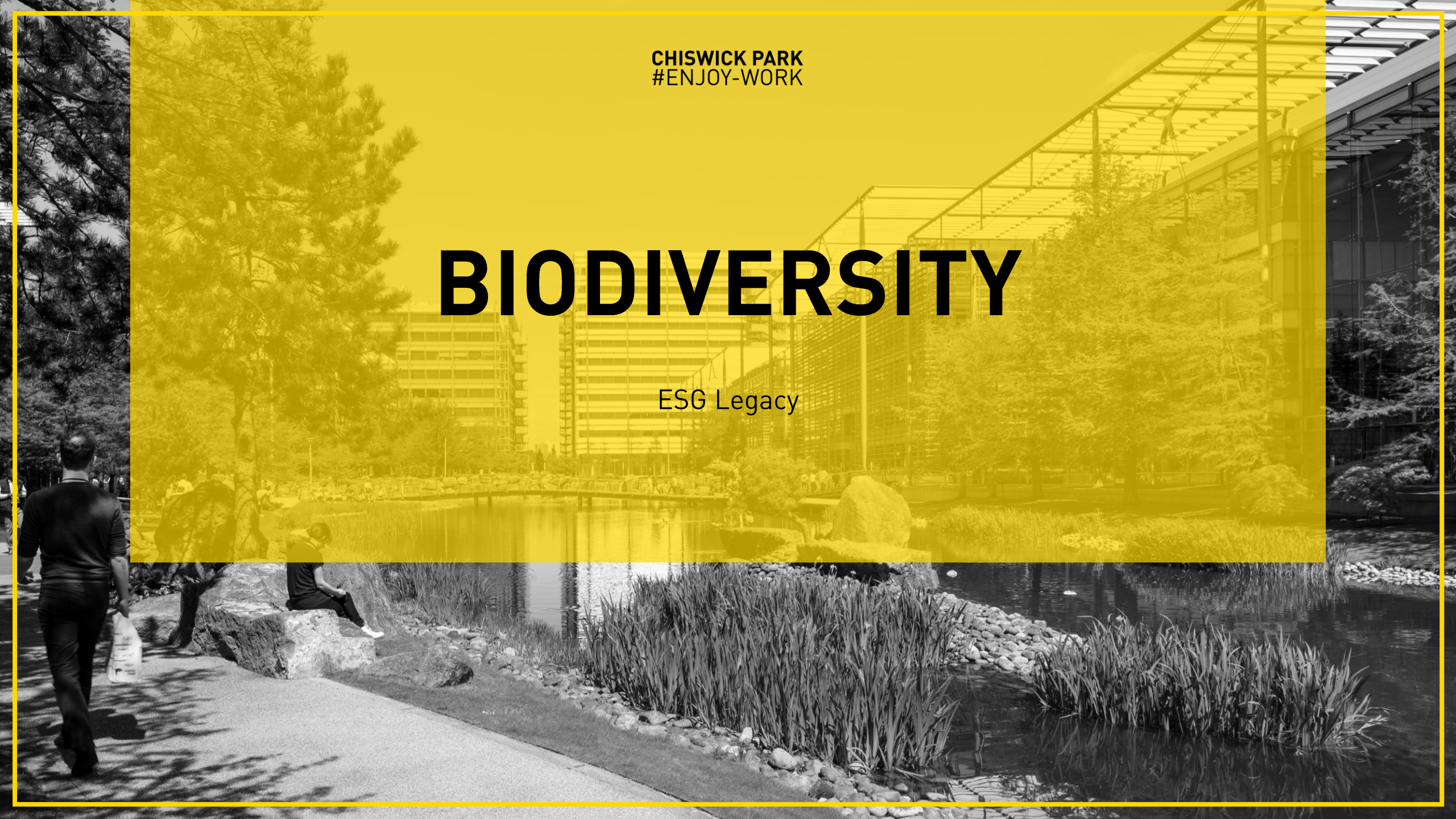


CHISWICK PARK  
#ENJOY-WORK

# BIODIVERSITY

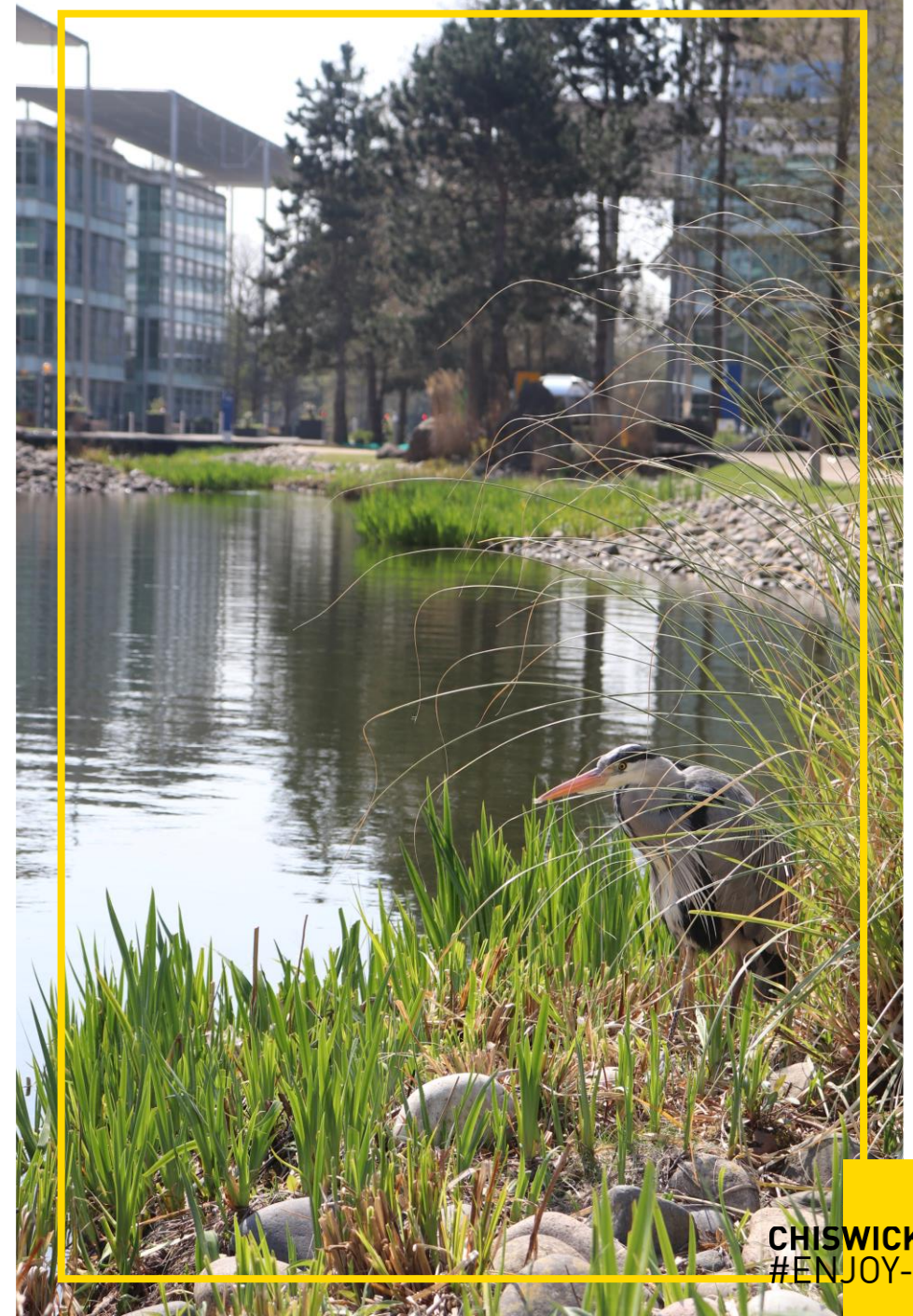
ESG Legacy





# BIODIVERSITY

- Chiswick Park's **100,000 strong onsite wormery** consumes **50kg of food waste every day** which is collected from Guest Company waste.
- Over the last 5 years we've collected around **10 tonnes** of **coffee grounds** and recycled these into our on-site **green waste mulching bays**.
- **Rain water** is harvested from the building roofs to **refill the Lake**.
- In 2015, we switched to **Battery Powered Landscaping Equipment** by using Solar Power, which is **100% Carbon Neutral**.





# BIODIVERSITY

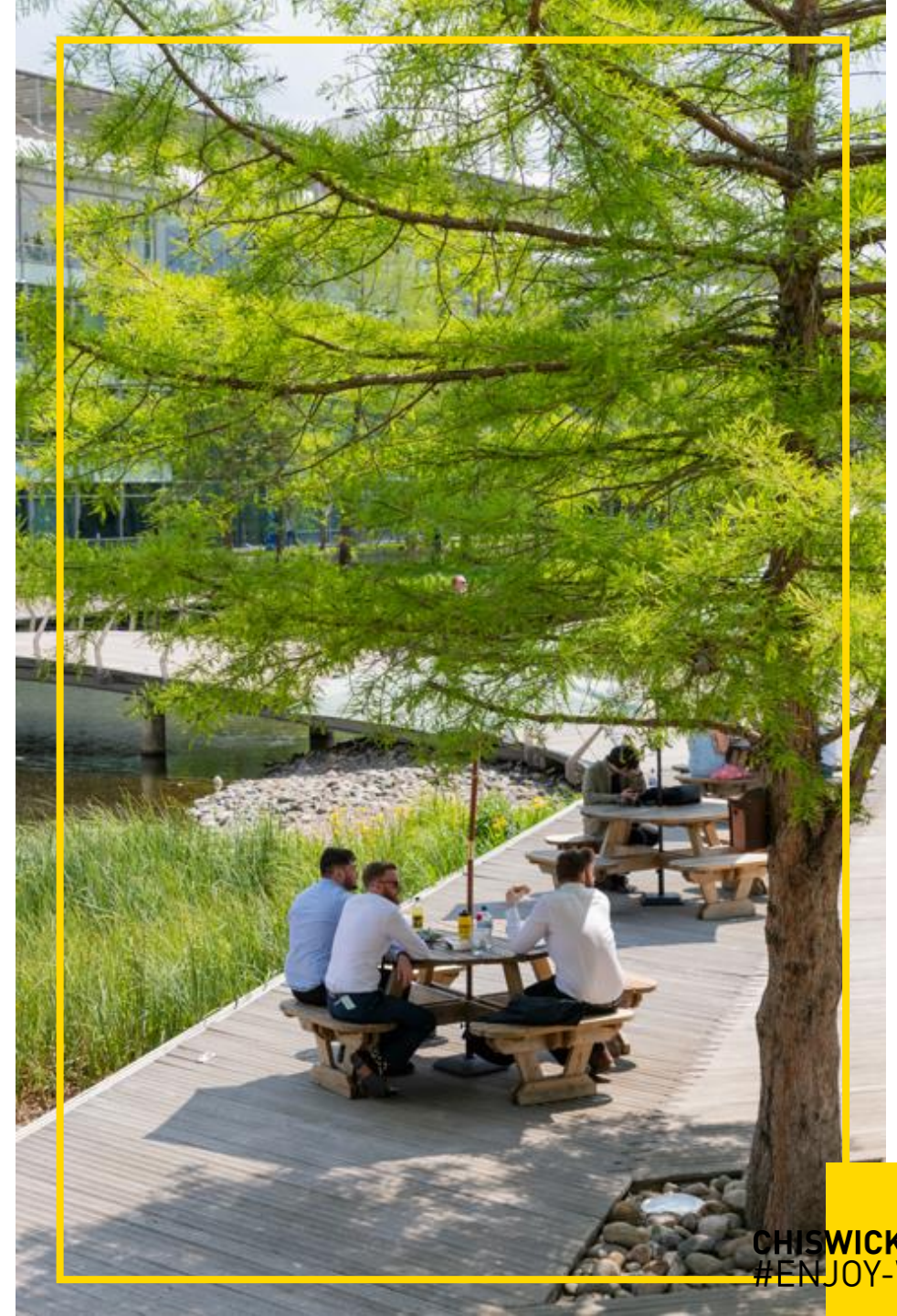


Food waste is collected from Guest Companies and then added to our compost heap. This is then fed to the thousands of worms in our wormery!



# BIODIVERSITY

- In 2014, we installed **2 Bee Hives**, which helped pollination within a **1 mile radius** of Chiswick Park. **60,000 bees** live in each hive, producing **20kg honey** every year.
- We're also part of the **Bumble Bee Trust** and implemented a **Bee Tracker** to help work out which flowers we need to **enhance pollination on the Park**.
- There are **20 bird boxes** located within the campus and in 2020 we installed **5 bat boxes**. These created **habitats to safeguard wildlife from predators**.
- Our **duck house** lives at the **top of the lake**, which we renewed in 2021. This is home to **Moorhens** and **Coots** who have used this space to nest.





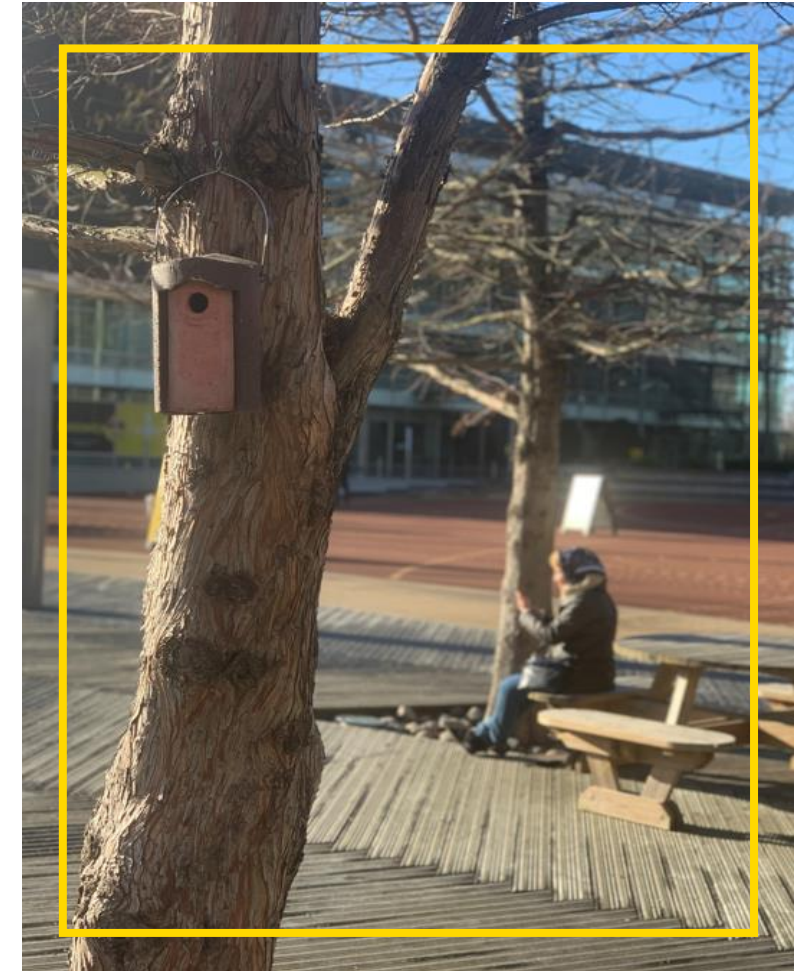
# BIODIVERSITY



We're proud members of the Bumble Bee Trust!



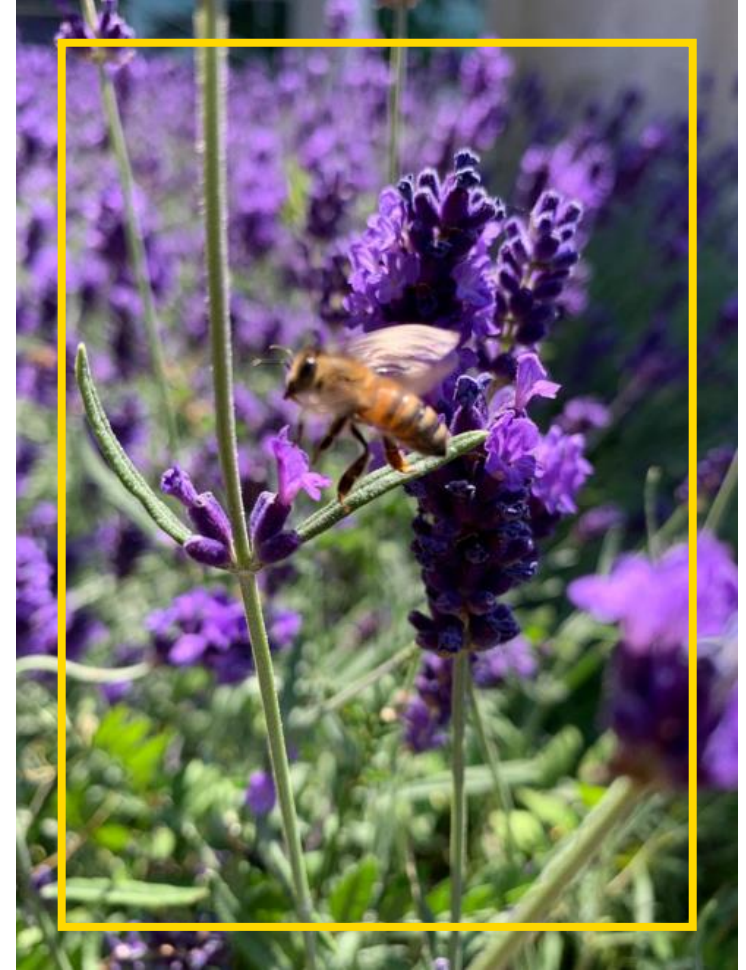
Our bat boxes are located throughout the campus.



Bird boxes are used to safeguard wildlife from predators.



# BIODIVERSITY



Our bee hives are home to over 60,000 bees! We implemented a Bee Tracker to enhance pollination on the Park.



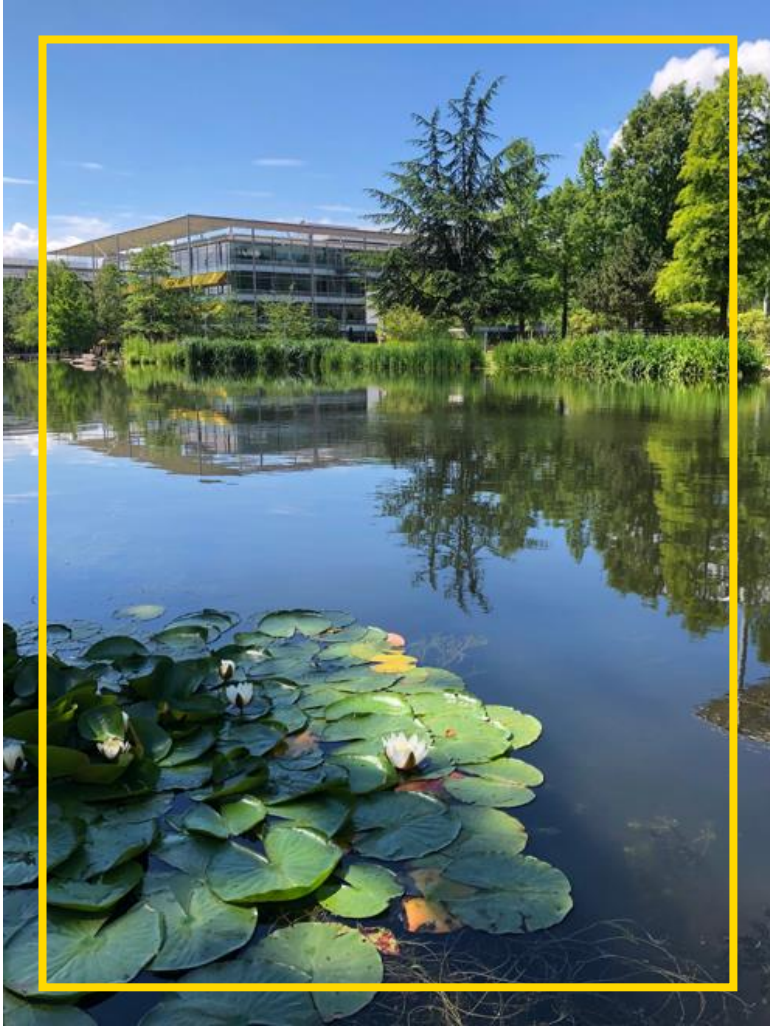
# BIODIVERSITY

- Our lake is home to over **300 fish** and we've carried out our **fish health checks** every year since 2000.
- These include:
  - Koi Carp
  - Roach
  - Tench
  - Amphibians
  - Dragonflies
- **Wildlife** around our lake include:
  - Ducks
  - Herons
  - Cormorants
  - Terns
  - Egyptian Geese
  - Tufted Ducks





# BIODIVERSITY



Our lake is home to a variety of wildlife!



Our Duck House located at the top of the lake

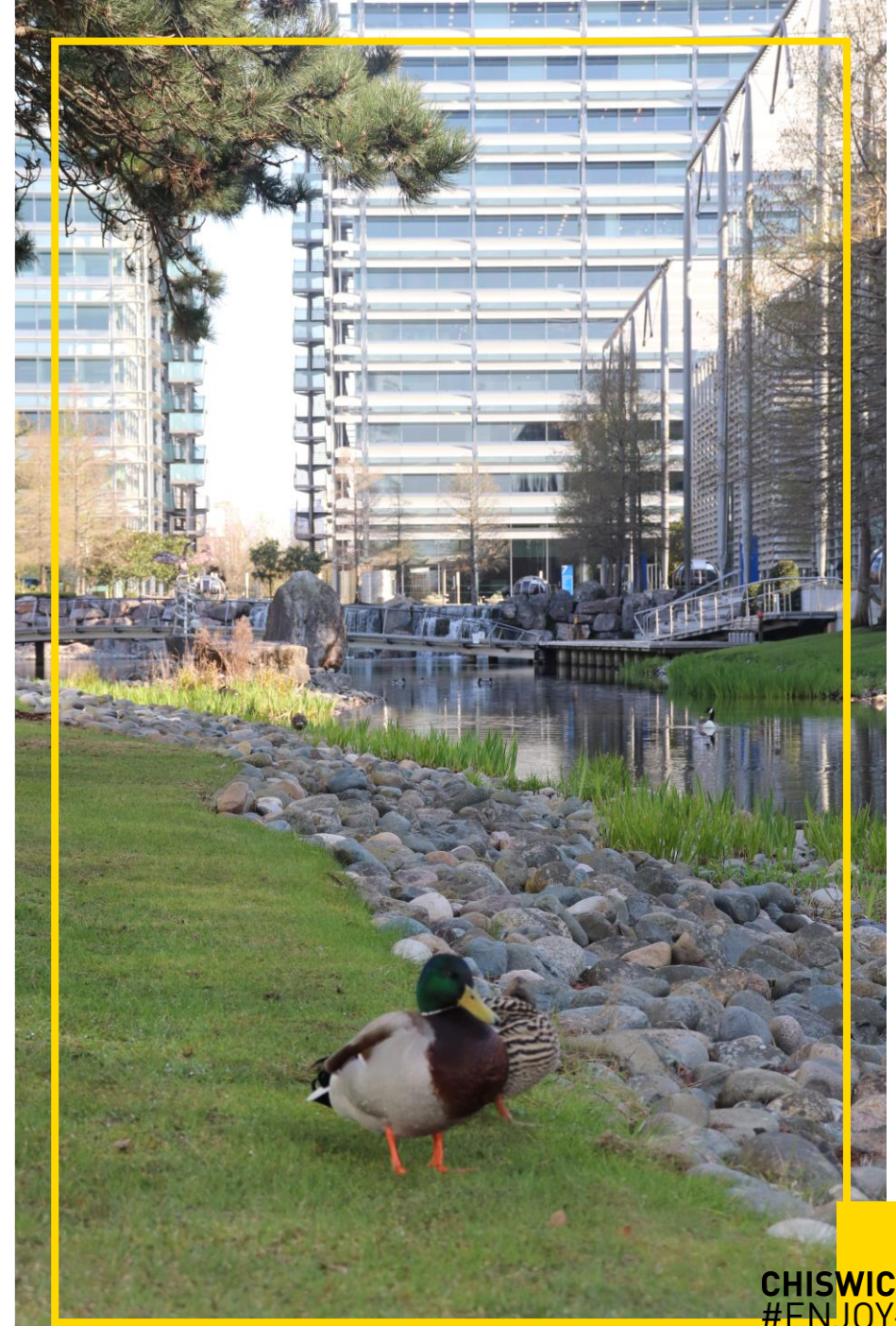


Over 300 fish live in our lake.



# BIODIVERSITY

- In **2013**, we built our **Bug Hotel** located towards the rear of the campus. This is made from **green/brown waste materials found on the park**.
- Our **Bug Hotel** is home to **thousands of insects** including:
  - Woodlice
  - Ear wigs
  - Beetles
  - Ladybirds
  - Spiders





# BIODIVERSITY



Our local Heron which you can regularly spot on the lake



Our Bug Hotel made up of 100% recycled materials



# BIODIVERSITY

- In 2020, we built a **wildlife pond** at the rear of the park to **encourage amphibians and insects** onto the park.
- We added a **stumpery** to the wild flower area by **Building 6 in 2020**. This created a great habitat for **stag beetles** with the stumpery made from leftover wood from tree work on the park.
- We implemented **Chemical Free Zones** onto the Park to encourage natural habitats and less pesticides.

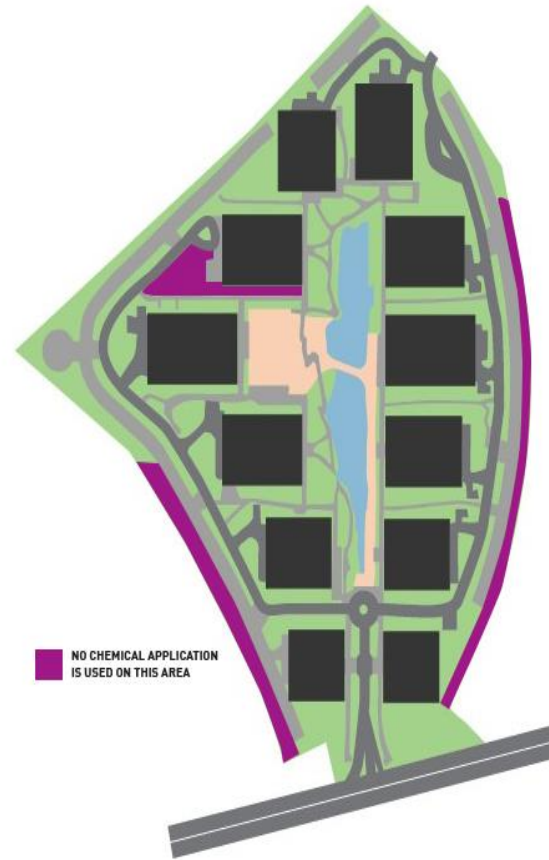




# BIODIVERSITY



A snapshot of our wildlife lake being built back in 2020.



A map of our chemical free zones.



A habitat for stag beetles located near Building 6.



# BIODIVERSITY

- In the last 5 years, we planted **10,000 new plants and trees** on the Campus.
- In **2020**, we implemented our **Plant Passport** scheme. This helped keep track of plant diseases in Europe.
- **Japanese Knotweed Technician Training** was implemented to help stop the spread of this **invasive species**. This increased our biodiversity by protecting the plants on the Park.
- In 2020, we carried out our **Tree Survey** with year 1 of 3 works completed. This has helped us to **understand the health of our trees** and replace old trees. Some trees have been used to enhance biodiversity across the park e.g. stumpery, bark mulch.





# BIODIVERSITY



Thousands of plants have been added across the Park to enhance biodiversity and create a beautiful environment for our Guests.